



KONICA MINOLTA

Colour and Surface Measurement for Dyes, Inks, Paints and Coatings

Colour Measurement for Development, Matching, Manufacturing and Quality Control



Giving Shape to Ideas

Matched, Quantified, Controlled Colour Measurement for Dyes, Inks, Paints and Coatings

Colour Measurement is a vital tool for producers of dyes, inks, paints and coatings. The visual appearance of these products is often the first quality indicator for the customer, so it should be controlled throughout design, specification, colour matching, manufacturing and QC. Konica Minolta can help to implement a solution throughout these processes offering users control, certainty and traceability.

Konica Minolta colour measurement solutions are widely used within the paint industry. Portable and benchtop solutions are available that can provide accurate results for all manner of samples including solid, liquid, glossy, transparent and textured.

Using the accurate and traceable colour measurement solutions of Konica Minolta in conjunction with the Colibri® software platform, customers have a state of the art colour specification and matching system that offers unmatched accuracy across workstations, sites or between supply chain partners.

Formulation: Adjustments to product and product colour to appeal to the customer, replace bases or colourants or to expand a product line.

Control: Quality control measurement in production including raw materials and finished products.

A colour measurement system will reduce waste and save time within development and manufacturing. This will help your organisation to establish a consistent brand or product colour that can be measured and reproduced anywhere in the world.

Example Applications Colour and Gloss Measurement



Colour Quality Control

Using digital and / or correctly maintained physical standards colour can be inspected vs specification. Measurements can be made wet or dry at the end of or during production to ensure the desired appearance of the finished product.



Colour Matching

Colour can be produced to a physical or digital specification using the Colibri® Computer Colour Matching platform and a traceable reference Spectrophotometer such as the CM-3700A. Colibri® will minimise the time needed for matching and correction, offering the potential for considerable time and waste savings.



Surface Gloss and Characteristics

Konica Minolta Sensing have partnered with Rhopoint instruments providing sales and support on their innovative IQ glossmeters. These instruments provide additional information on surface appearance including quantifiable data for “orange peel” and reflected image quality. Surface gloss also effects colour measurement and assessment. Konica Minolta Sensing Spectrophotometers can exclude the specular reflection to improve colour measurement accuracy and correlation with visual assessment.



Metallic and Effect Paints

Metallic paints can be accurately measured using a multi angle spectrophotometer such as the CM-M6 (opposite) which measures at 6 angles to provide data on the complete visual effect.



User Friendly Colour Measurement Specified and Built Around Your Needs



Benchtop Spectrophotometer CM-3700A

The flagship spectrophotometer from Konica Minolta Sensing, built without compromise. The CM-3700A offers the highest levels of accuracy, repeatability and inter-instrument agreement. Users can measure colour in reflectance and transmittance for solid and liquid samples with all levels of opacity.



Portable Spectrophotometer CM-700d

A versatile portable instrument with a switchable measurement aperture ideal for measuring small or curved samples. The instrument has a colour display and measurement data can be transmitted via Bluetooth to colour data software or the Colibri® software platform.



Rhpoint IQ-S

Standard glossmeters only measure how much light is reflected and are not sensitive to diffuse gloss effects which dramatically reduce appearance quality. The IQ-S measures not only "traditional" 20°/60°/85° Gloss but also R_{Spec} Reflectance Haze and DOI/RIQ, parameters that would otherwise require multiple measuring instruments. The IQ-S is the ideal upgrade for manufacturers or supply chains where professional surface appearance is of primary concern.



Portable Spectrophotometer CM-M6

A portable Multi Angle Spectrophotometer for measurement of metallic painted surfaces illuminating from 45° from left and right measurements are made at 6 angles as described in ASTM E2194 or DIN 5033-7. The CM-M6 is particularly suited to small and curved surfaces for example wheel arches, front and rear bumpers and wing mirrors.



Portable Spectrophotometer CM-25cG

A portable instrument with a 45°:0° measurement geometry, the CM-25cG provides accurate colour data that correlates closely with visual assessment irrespective of any surface texture. The device also measures gloss at 60° providing an extra dimension to appearance measurement. 45° geometry is required when measuring road markings and similar coatings.

Portable Spectrophotometer CM-26dG

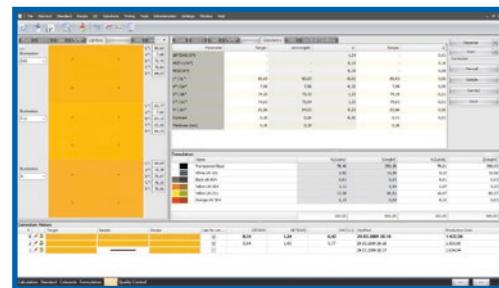
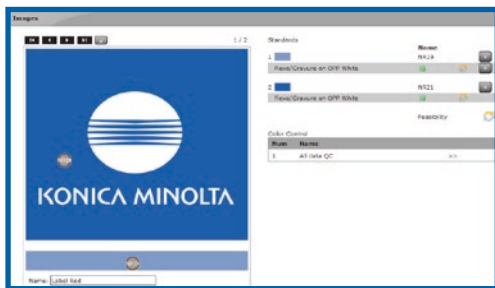
Portable d:8° spectrophotometer designed with updated sample viewing port and innovative new features for process control and Digital Colour Management. The CM-26dG also includes an ISO compliant 60° gloss sensor and can benefit from the CM-CT1 software for network administration and remote support.



Colibri®: One software platform for the Global Colour Supply Chain

Colibri® is a computer colour matching and communication software platform used for specification, formulation and quality control of colour. The system is fully modular, allowing the solution to grow with the needs of the organisation, it is suitable for single-client and small businesses as well as for large global enterprise installation. Owners can utilise the latest in information technology to host databases either in the cloud or in their own network environment, controlling access and management of data either locally or at a supplier anywhere in the world.

- Specification of brand colours
- Customisation of colour standards
- Colour management for the entire value chain
- Colour measurement with application support
- Colour communication tools and services
- Accelerated creation of quality products
- Connection with enterprise resource planning tools and other third party software products



Colibri® can be used throughout the development process; ascertaining feasibility, calculating cost efficient recipes, reducing waste and providing colour QC. The software includes a number of features specific to the coatings industry and can be integrated with existing systems such as dosing and ordering systems.

Konica Minolta Sensing is a distributor of matchmycolor LLC for software and services. Colibri® is a registered trademark of matchmycolor LLC

Glossmeters, Surface Analysers and Colour Viewing Cabinets



Glossmeters and Surface Analysers

Rhopoint Glossmeters are innovative portable instruments for measuring the surface characteristics of a sample, allowing a quantitative and traceable measurement. The range includes solutions for samples with different levels of gloss, curvature, haziness and size.

The Rhopoint TAMS (pictured) is the latest technology developed with Volkswagen AG and Audi AG. The TAMS is used to provide a quantitative measure for the Quality and Harmony of measured surfaces.

Colour Viewing Cabinets

JUST Normlicht colour viewing cabinets allow colour assessment and approval to be carried out under one or more controlled and consistent light sources.

A colour viewing cabinet also provides an optimum lighting environment for agreeing specification, standards and final sign off of colour with supply chain partners or customers. Both LED based and traditional fluorescent cabinets are available in the portfolio.

